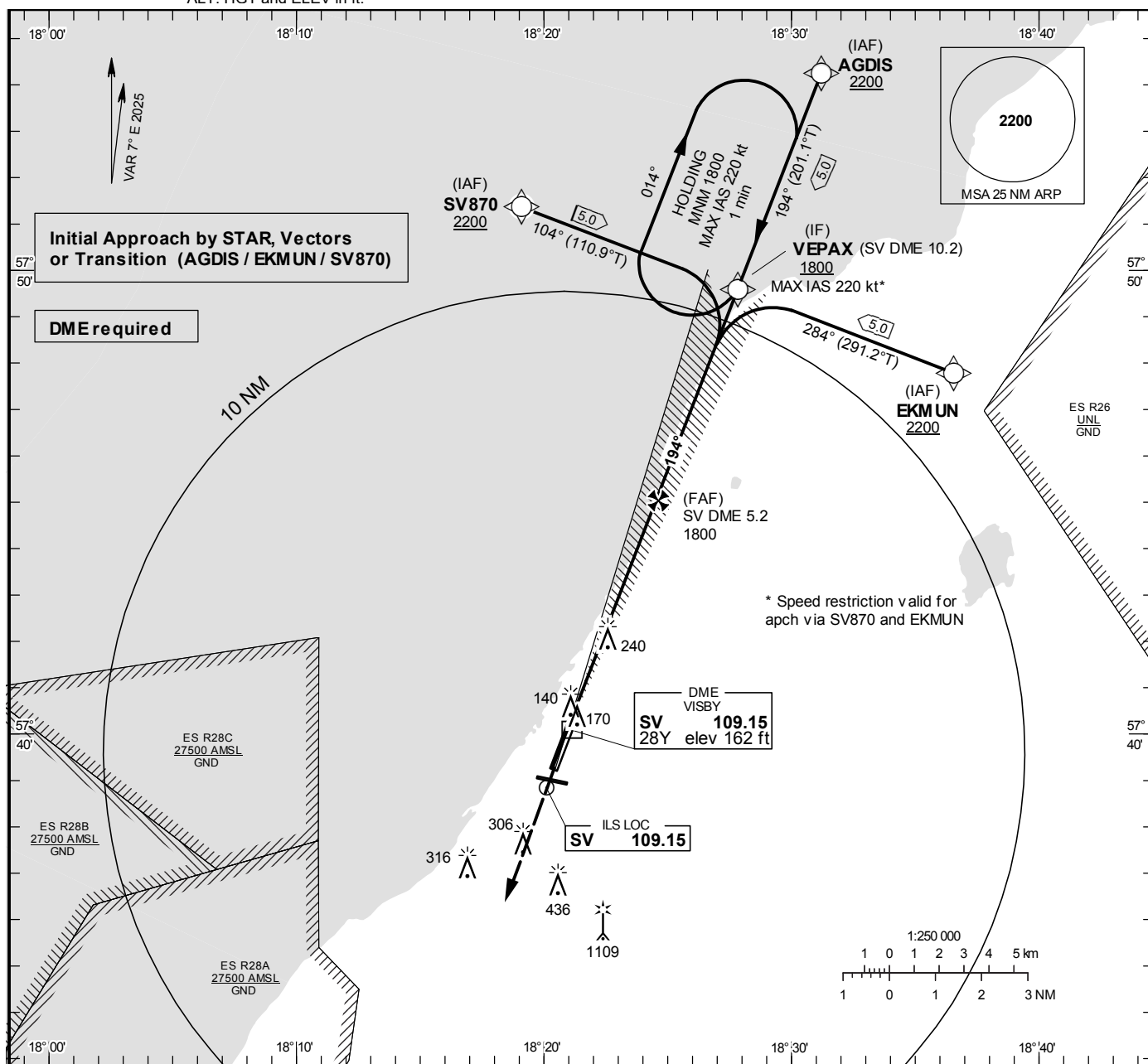


**INSTRUMENT  
APPROACH  
CHART – ICAO**

**THR ELEV 137.0 ft, AD ELEV 164 ft**  
OCH are related to THR.  
Circling OCH are related to AD ELEV.  
BRG are MAG  
ALT. HGT and ELEV in ft.

VISBY TOWER 120.305  
VISBY APPROACH 126.155



TA 5000 ft AMSL

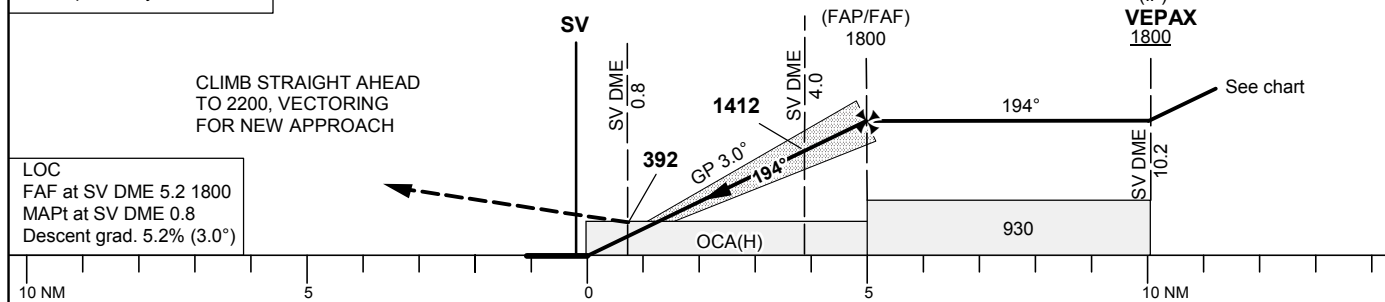
RDH 57.1 ft

\*Timing not authorized for defining the MAPt

OM replaced by SV DME 4.0  
MM replaced by SV DME 0.8

CLIMB STRAIGHT AHEAD  
TO 2200, VECTORING  
FOR NEW APPROACH

LOC  
FAF at SV DME 5.2 1800  
MAPt at SV DME 0.8  
Descent grad. 5.2% (3.0°)



OCA (H)					Final approach		LOC Distance FAF-MAPt 4.4 NM*				
Cat of ACFT	A	B	C	D	DME SV NM	5	4	3	2		
Straight-in Approach	CAT I	285(148)	296(159)	304(167)	316(179)	ALT	1731	1412	1094	775	
	LOC	500 (360)				GS	kt	100	120	140	180
Circling W RWY		630(460)	780(610)	1510(1340)	1510(1340)	Time	min:ss	03:19	02:39	02:13	01:54
		630(460)	630(460)	740(570)	1010(840)	Rate of descent	ft/min	425	530	635	745

CHANGE: Editorial